



CORC Gravity Enduro “Round 2”

Enduro National Series Round 5 Supplementary Regulations

Stromlo Forest Park
May 20th and 21st 2017

Event Schedule

Event Schedule	
Monday	Event Supp Regulations published @ www.corc.asn.au
Wednesday	On Line Entry to Open. Limited to 200 Entries @ www.registernow.com.au
Monday 15 May	Final event schedule and maps for race published @ www.corc.asn.au
Wednesday 17 May	Entries Close if not sold out prior to this date.
Friday 19 May	Course marking and walk by officials. Start list published @ www.corc.asn.au
Saturday 20 May	Registration opens at 9.00am
	Official practice starts at 9.30 am. Self-shuttles possible via Stromlo road.
	Registration closes 3.00pm
	Official practice closes at 4.00pm
Sunday 21 May	Registration opens at 7.30am
	Riders Briefing at 8.00am
	First rider starts liaison stage 1 8.30am
	First rider finish Stage 5 12.30 pm. Approx 60km of total riding.
	Event closes at 4.00pm



The Event

This Enduro is the second round of the 2017 National series. It will be conducted under the general rules for cycling as published by the UCI but specifically the 2015 Gravity Enduro National Series Rulebook as published by MTBA. <https://www.mtba.asn.au/wp-content/uploads/2015-gravity-enduro-national-series-rulebook-version-1.1.pdf>

Running of the event

The event will be conducted over 5 stages and 5 liaison section.

Timing will be carried out using the SPORTident Air timing systems provided by White Lightning Events.

www.sportident.com/documents/information_technical/SI_system_AIRplus/sportident_airplus_information_for_athletes.pdf

Each rider will be given individual start times for each stage. If a rider does not attend this start time a time penalty will be issued as per Section 7.5 Recommended Penalties in the Gravity Enduro National Series Rulebook.

Starting order within categories will be based on section 5.4 of the Gravity Enduro National Series Rulebook

Start order for the event will be determined by the Chief Commissaire

Late time limit for each rider will be 30 minutes. Once this is exceeded a rider will be classified as a Did Not Finish

Draft Running Schedule for the Event

Time Control	Stage Dist km	Liaison Dist km	Total Dist km	Target Time min	First Rider Due	Last Rider Due
Start		6	6	30	8.30	10.30
TC 1	4	6	11	60	9.00	11.00
TC 2	4	6	8	45	10.00	12.00
TC 3	5	4	9	45	10.45	12.45
TC 4	4	4	9	45	11.00	13.00
TC 5	5		5	15	11.45	13.45
Finish					12.00	14.00
Total	22	26	48	4h		



Maps and final course description

Will be published on Friday 13 May on the CORC web site

Shuttles

Friday

No official practice. Stromlo will be open for riding but care should be taken as course marking will be underway.

Saturday

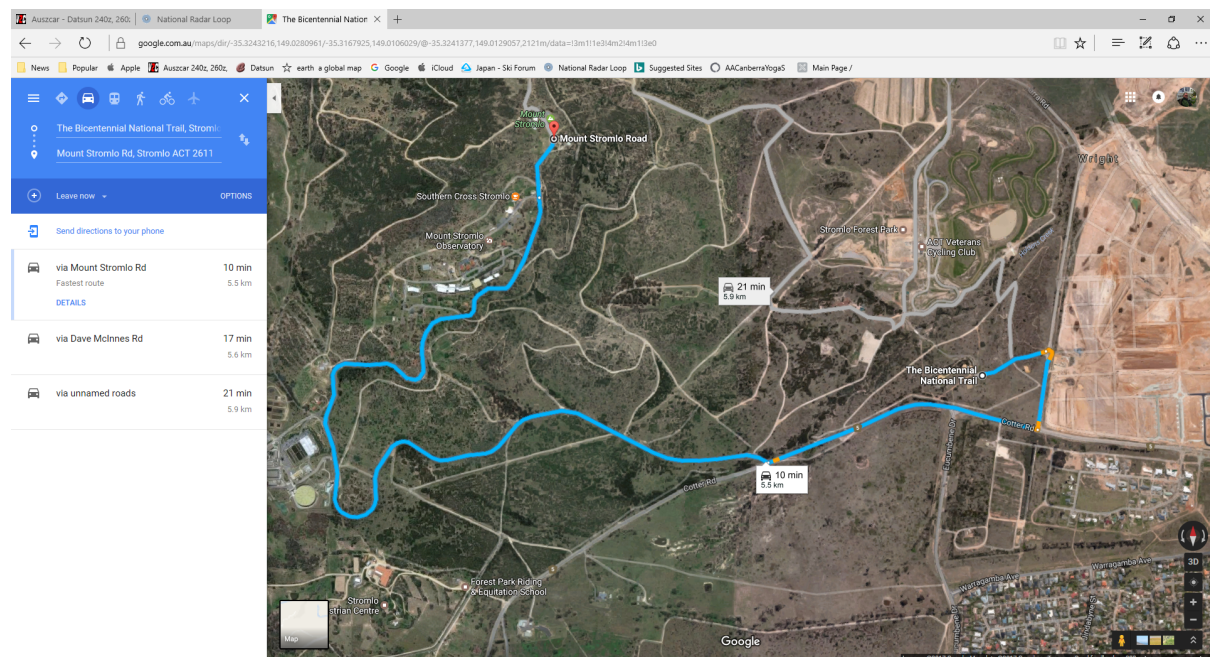
Shuttles are allowed during official practice on Saturday.

Dynamic Motivation Shuttle service will be conducting shuttles of Friday 19th and Saturday 20th May booking for this service should be made directly with them at

<http://www.dynamicmotivation.com.au/pages/bus-shuttles> .

Self-shuttles can be run up Mt Stromlo Rd from the “Bush Fire Memorial” car park.

Competitors are reminded that this is utilising a public road and all road rules are to be obeyed. Any reports from the Police or Public regarding unsafe or illegal behavior will result in exclusion from the event.



Sunday

No shuttles are allowed during racing on Sunday. Any riders found being shuttled on Sunday will be disqualified



MOUNTAIN BIKE AUSTRALIA



Stromlo Forest Park

Stromlo forest park is a public facility that is open to public use during non-competition periods. Riders are free to come and ride the park at any time unless it is closed for a competition. Further information can be obtained from <http://www.stromloforestpark.com.au/>

No Camping will be available at this event at Stromlo Forest Park

Camping is available at Cotter Reserve if required.

http://www.tams.act.gov.au/parks-recreation/recreational_activities/camping-in-the-act/cotter_campground

Categories

2017 GE NATIONAL SERIES CATEGORIES

- Elite Men & Women
- Expert Men & Women
- Junior Men & Women
- Under 17 Men & Women
- Under 15 Men & Women
- Masters 1/2 Men & Women
- Masters 3/4 Men & Women
- Masters 5/6 Men & Women
- Masters 7/8 Men & Women
- Masters 9/10 Men & Women
- Masters 10 Men & Women

Entry

On line entry will open on Wednesday the 12th April and close when sold out or on Wednesday 17 May whichever occurs first.

Online entry will be via <https://online.mtba.asn.au/ERegister.aspx?E=3614>

Entries will be limited to 200 riders across all categories. Entries will be on a first come bases.

Entry Fee will be

\$100

Elite Men & Women

Expert Men & Women

Masters 1/2 Men & Women

Masters 3/4 Men & Women

Masters 5/6 Men & Women

Masters 7/8 Men & Women

Masters 9/10 Men & Women

\$75

Junior (U19) Men & Women



MOUNTAIN BIKE AUSTRALIA



\$50

Under 17 Men & Women

Under 15 Men & Women

Equipment Requirements

Helmets

Helmets must comply with Standard B as outlined in the Gravity Enduro National Series Rulebook section 5.6.1.1

Safety equipment

Junior Riders are reminded of section 5.6.1.2 of Gravity Enduro National Series Rulebook

All riders are reminded of section 5.6.1.3 of Gravity Enduro National Series Rulebook

Awards

A list of category prize money and awards will be posted at registration.

Further information

Further information will be available via the CORC web site or can be obtained by emailing Jeff Hughes on 0427885112